

Status of Students with Special Needs and Support Center at the University of Alicante (Spain)

University of Alicante



INOVEST
Eastern Partnership in Pedagogical
Innovations in Inclusive Education

Alicante May 21/2013

Student Support Center **MISSION**

... to offer a specific attention for the students of our University that, by personal circumstances, familiar or partner-economic, can be in situation of disadvantage or affected in academic performance, with the aim to guarantee students full university participation, following the principles of equal opportunities and universal accessibility and by means of the development of programs of integration, advice and sensitisation headed to the university community.





Our specific mission as professionals:

- **Detect Needs**
- **Advise the students**
- **Develop a personalized plan of action**
- **Confidentiality**
- **Guide the teacher adaptations and disability treatment**
- **Give Support both the student and the teacher**

Student Support Center **PROGRAMMES**



**Social
area**

A Venn diagram consisting of two overlapping teal circles. The left circle is labeled 'Social area' in yellow text. The right circle is labeled 'Psychological area' in green text. The overlapping region in the center is where the two circles intersect.

**Psychological
area**

holistic approach

A close-up photograph of a wooden surface, likely a desk or table, with several pieces of colored chalk (blue, pink, yellow, and white) scattered on it. The lighting is warm and focused on the chalk.

Student Support Center **PROGRAMMES**

- Equal Opportunity
- Volunteering
- Social Action
- Psychological Guidance and Counselling



Equal Opportunity

PROGRAM

Main objective

To put in the same level the opportunities of the students

Target Audience

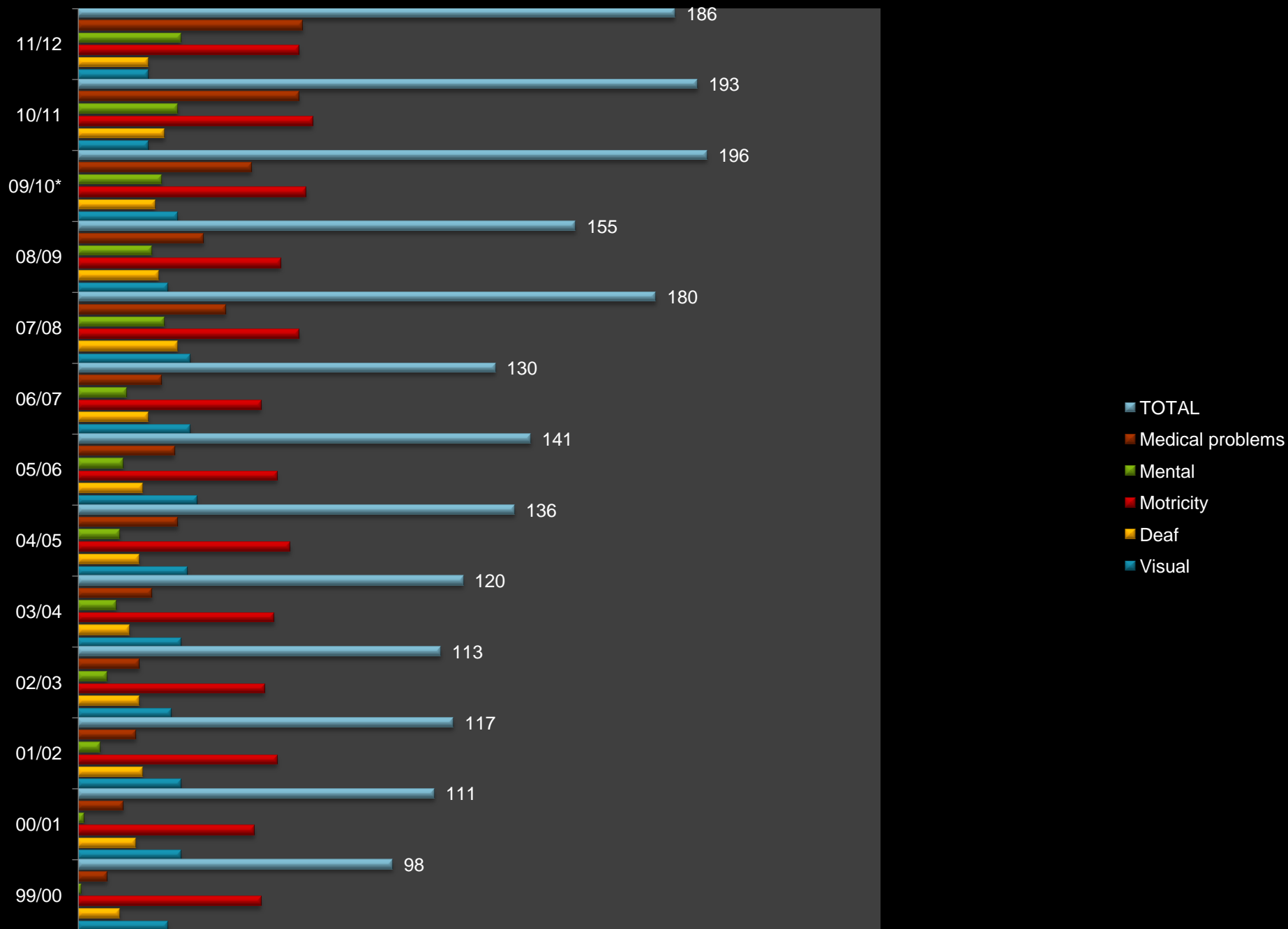
Self-reported students

Interventions

- **Inform the teacher**
- **Report test adaptations approved by the Governing Board (and others)**
- **Make a adaptation proposal**
- **Provide adequate assistive aids (UNIVERSIA Foundation)**
Inform student about advantages of disability certificate
- **Develop workshops and training courses**
- **Promote Student Professional Integration**

Equal Opportunity PROGRAM DEVELOPMENT

Academic Year	Visual	Deaf	Motricity	Mental	Medical problems	TOTAL
99/00	28	13	57	1	9	98
00/01	32	18	55	2	14	111
01/02	32	20	62	7	18	117
02/03	29	19	58	9	19	113
03/04	32	16	61	12	23	120
04/05	34	19	66	13	31	136
05/06	37	20	62	14	30	141
06/07	35	22	57	15	26	130
07/08	35	31	69	27	46	180
08/09	28	25	63	23	39	155
09/10*	31	24	71	26	54	196
10/11	22	27	73	31	69	193
11/12	22	22	69	32	70	186



The top of the slide features a background image of a wooden surface with several pieces of colored chalk (blue, pink, yellow, and black) scattered on it. The text 'Equal Opportunity' is overlaid on this image in a white, serif font.

Equal Opportunity

PROGRAM

Professional Integration Project

Employ Promotion for Disabled Students and
Graduates: **Employment Custom Itinerary**



Equal Opportunity

PROGRAM

Professional Integration Project : Employment Custom Itinerary

Aim : Find a Job Place

Purpose: Autonomy

Working mode: Normalize



Equal Opportunity

PROGRAM

Professional Integration Project : As Guidance Process

Aim : Find a Job Place

Purpose: Autonomy

Working mode: Normalize

The background of the top section of the slide is a photograph of a wooden surface, possibly a desk or table. On the surface, there are several pieces of colored chalk in shades of blue, pink, and yellow, some of which are slightly blurred, suggesting a shallow depth of field.

Equal Opportunity

PROGRAM

Professional Integration Project : As Guidance Process

- It has the characteristics expected in this type of service
- But also has the questions related to the university environment.
- Basically:
 - The Classic relationship between University and Business
 - The possibility of doing an internship in a company.



Equal Opportunity

PROGRAM

Professional Integration Project : Development

- **M**otivation to do an internship (students in the last years/2nd module)
- **P**ersonal Knowledge
- **R**evision of abilities/competences (workshops) both cross curricular and general
- **M**ediation: preparation for the exam to work in the public sector (depending on career goals)
- **M**onitoring



Equal Opportunity

PROGRAM

Professional Integration Project :

Development

This development requires:

- **Accessibility** wherever necessary
- **Application** of the appropriate legislative measures



Equal Opportunity

PROGRAM

Professional Integration Project :

IS IT INCLUSIVE?

- Allows achieving autonomy
- Avoids paternalism or patronizing attitude
- Doesn't want positive discrimination measures
- Standardizes the success achieved by former graduates



Equal Opportunity

PROGRAM

Professional Integration Project :

CONCLUSIONS

- Further Education as a means and not as an end in itself.
- A means to get to do things beyond the educational period.

A close-up, slightly blurred photograph of a wooden surface, possibly a desk or table. Several pieces of colored chalk (blue, pink, yellow, white) are scattered on the surface. The lighting is warm, and the focus is soft.

Volunteering

PROGRAM

Basically:

Manage and organize the volunteers for tasks on the campus to help their fellow students

A close-up photograph of a wooden surface with several pieces of colorful chalk (blue, pink, yellow, white) scattered on it. The background is slightly blurred.

Volunteering

PROGRAM

WHAT WE DO IN THE VOLUNTEERING PROGRAM:

- **Provide** training for volunteering
- **Providing** awareness of the different social realities
- Information on the activities to be carried out in support of their fellow students with special needs.
- **Set** a network between all those who participate in voluntary work, inside or outside the university itself.

The background of the top section of the slide is a photograph of a wooden surface, possibly a table or desk. On the surface, there are several pieces of colored chalk in shades of blue, pink, and yellow. The lighting is soft, creating a warm and inviting atmosphere.

Volunteering

PROGRAM

AND ALSO:

- **P**romotion of voluntary activities
- **V**olunteers meetings
- **C**ontribute to the participation of young university students in voluntary activities inside and outside the university
- **C**arry out professional monitoring of the university volunteers' performance



Volunteering

PROGRAM

SUMMARIZE:

Target:

Provide personal support and promote solidarity

Target Audience:

All the students

A close-up photograph of a wooden surface with several pieces of colorful chalk (blue, pink, yellow, white) scattered on it. The image is slightly blurred, focusing on the text overlay.

Social Action

PROGRAM

Target:

Not leaving university before graduation

Target Audience:

All the students

GENERAL PROFILE OF THE STUDENTS WHO TAKE PART IN THIS PROGRAM:

- **Financially independent; low income below the minimum wage/salary**
- **From family units without an income**
- **Immigrants with little means**
- **Parents on the jobseekers' allowance or unemployed**
- **Social services users, NGOs and other institutions**
- **Other situations that may make the family's financial situations worse**

INTERVENTIONS IN THE SOCIAL-ACTION PROGRAM:

- **Counselling/guidance** on the university's internal and external resources: UA and MEC grants, social services allowances, diputacion, local council, NGOs, foundations.....
- **Support:** Transport, photocopying or printing, stationary, accommodation, meals, books.
- **Monitoring**

A close-up photograph of a wooden chalkboard with several pieces of colored chalk (blue, pink, yellow) lying on its surface. The image is slightly blurred, focusing on the text overlay.

Psychological Guidance and Counselling PROGRAM

Target:

Promoting the adaptation to the university environment and optimize academic performance.

Target Audience

All students.



Psychological Guidance and Counselling PROGRAM

WHAT WE DO?

- Information and individual counselling related to personal problems.
- **Sexology** counselling project.
- **Creating** working groups.
- **Personalized** advice on issues related to the study.
- **Career** counselling.
- **Workshops** for performance improvement (study skills)
- **Workshops** for coping with exams (anxiety management, presentations, ...)
- **Assessment** and instructional adaptations counselling of students with disabilities.

Analysis of Psychological Guidance and Educational Counseling Demand at the University of Alicante

Type of demand based on the academic course



**THANK YOU for
your attention !**

Contact:

- E-mail: cae@ua.es
- <http://web.ua.es/cae>
- <http://uayuda.ua.es/>

University of Alicante



INOVEST
**Eastern Partnership in Pedagogical
Innovations in Inclusive Education**

Alicante May 21/2013